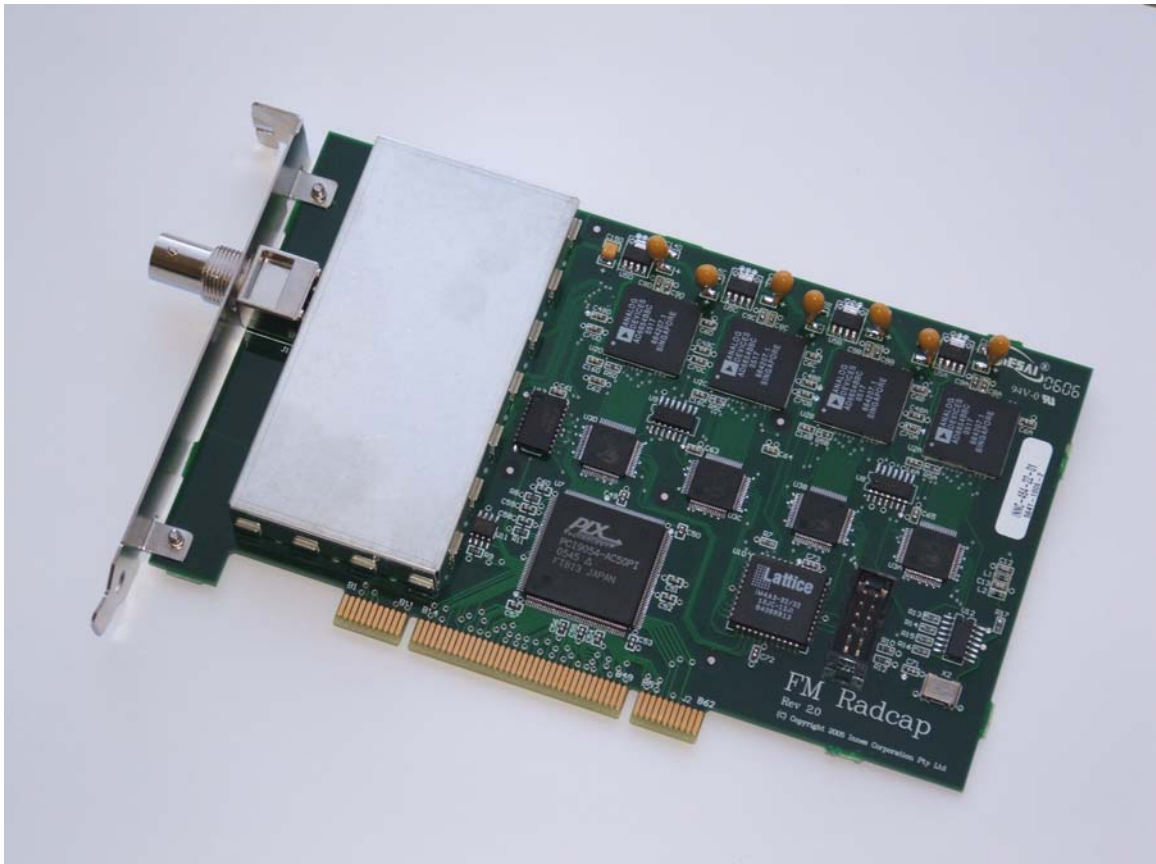


# *Radcap Connect*



# Radcap Connect

## Overview

*Radcap Connect* is an audio distribution program that routes the outputs of AM and FM Radcap cards to the available sound card outputs. It will find application in media monitoring and the distribution of multiple radio feeds.

While *Radcap Connect* can be used with any sound cards that support DirectShow, it is particularly well suited to the Auricon 4.1 which has four stereo (or eight mono) balanced outputs.

## System Requirements

- Windows 2000, XP or later
- One or more AM or FM Radcap cards
- One or more audio output cards (one output needed per station to be monitored)

## Installation

Install the AM and/or FM Radcap cards and sound cards in the PC to be used with *Radcap Connect*.

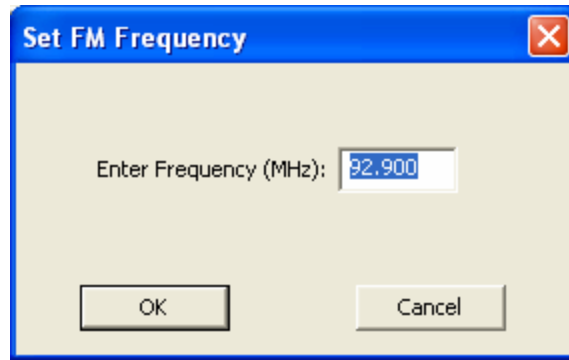
Run **setup.exe** from the supplied media. A shortcut to *Radcap Connect* will be installed in the **Start - Programs** menu.

Click on **Start – Programs – Radcap Connect**. A window similar to that shown below should appear. The actual details of AM and FM stations will vary depending on the particular combination and configuration of cards used.

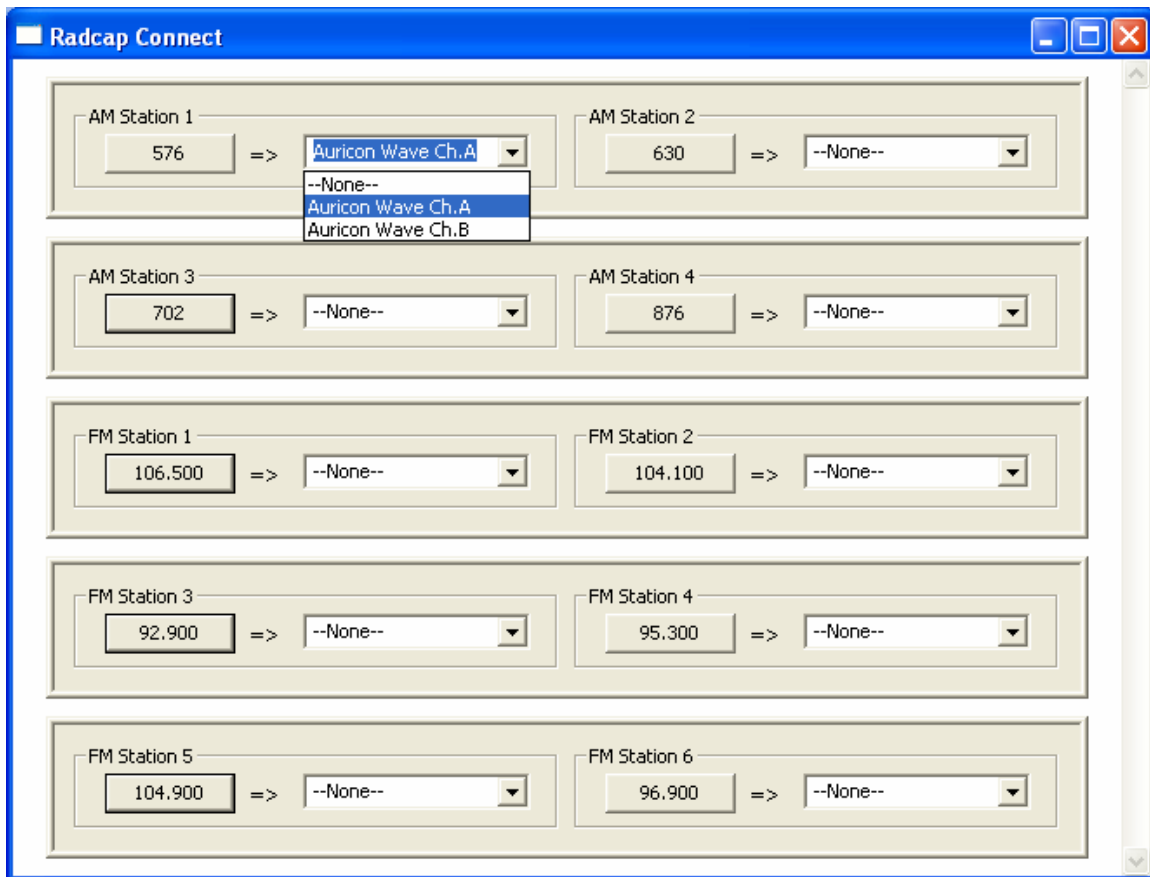
The screenshot shows the 'Radcap Connect' window with a blue title bar and standard Windows window controls. The main area is divided into six sections for configuring radio stations, arranged in three rows of two. Each section contains a frequency input field, an equals sign followed by an arrow (=>), and a dropdown menu currently set to '--None--'.

Station Type	Station Number	Frequency	Dropdown
AM	1	576	--None--
AM	2	630	--None--
AM	3	702	--None--
AM	4	876	--None--
FM	1	106.500	--None--
FM	2	104.100	--None--
FM	3	92.900	--None--
FM	4	95.300	--None--
FM	5	104.900	--None--
FM	6	96.900	--None--

To set the frequency of each station, click on the corresponding button for that station and enter the frequency (in kilohertz for AM or megahertz for FM), as shown in the dialog box below.



To set the routing of each station, click on the dropdown list next to the station frequency button and select the desired audio output channel.



Note that if multiple stations are routed to a single output, only the first one will play through that output.

When playing multiple stations in mono, it may be advantageous to configure the Radcap cards as **Paired** so that two stations play out of the left and right outputs of the sound card(s). Refer to the relevant Radcap documentation for details on how to set the configuration.