

## Installing a 1/2-wave-spaced Versa2une antenna

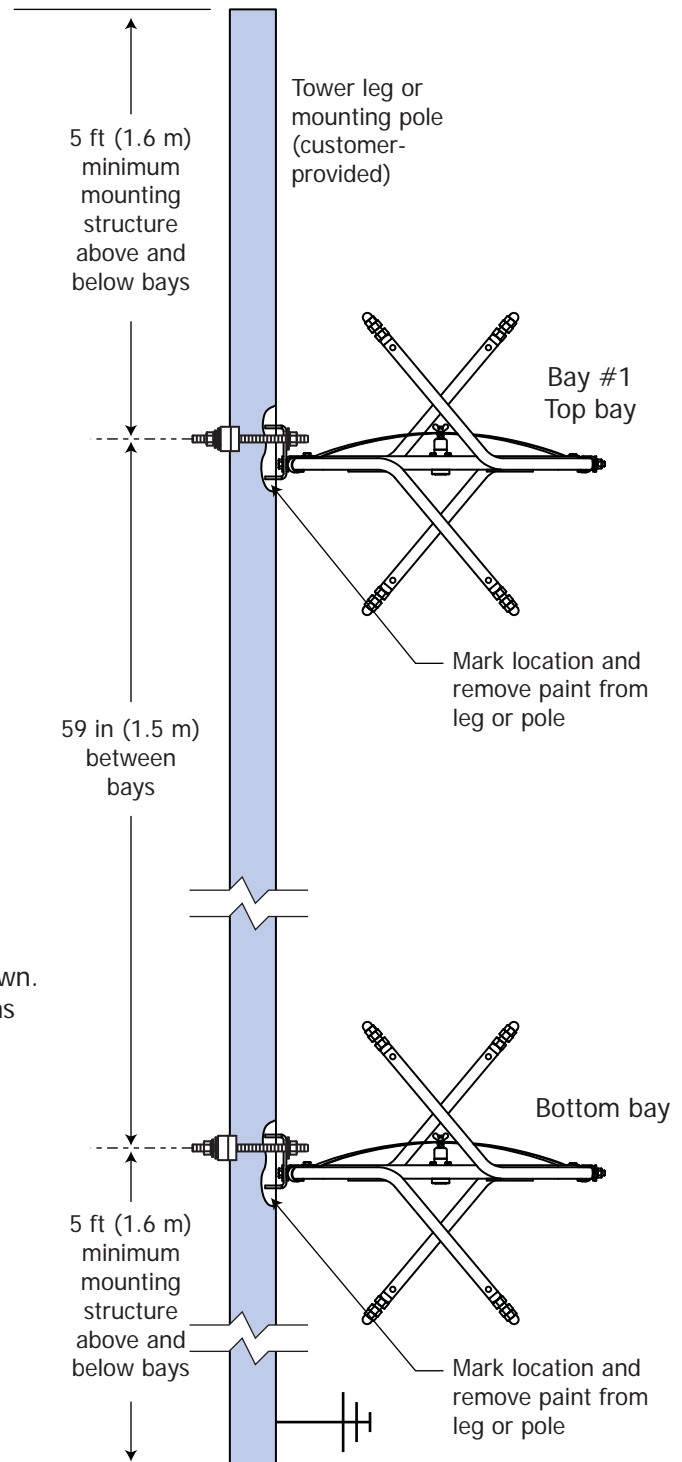
For a half-wave-spaced antenna, install in accordance with the manual, im-SLV, with the following four exceptions:

1. Adjust the bay-to-bay spacing to 59".
2. Change the arm lengths.
3. Attach the feedstrap in holes made specially for this configuration.
4. Change the power divider mounting slightly.

Here goes:

1. Mount the antenna bays with vertical spacing of 59 inches **INSTEAD OF 118 inches** as shown in Figures 2 and 3 of the manual.

Two-bay detail shown.  
Other configurations  
are similar.



### Document No. ts-SLV 1\_2-wave installation (141015)

A Division of Howell Laboratories, Inc., P. O. Box 389, Bridgton, Maine 04009 USA

(207) 647-3327

1-888-SHIVELY

Fax: (207)647-8273

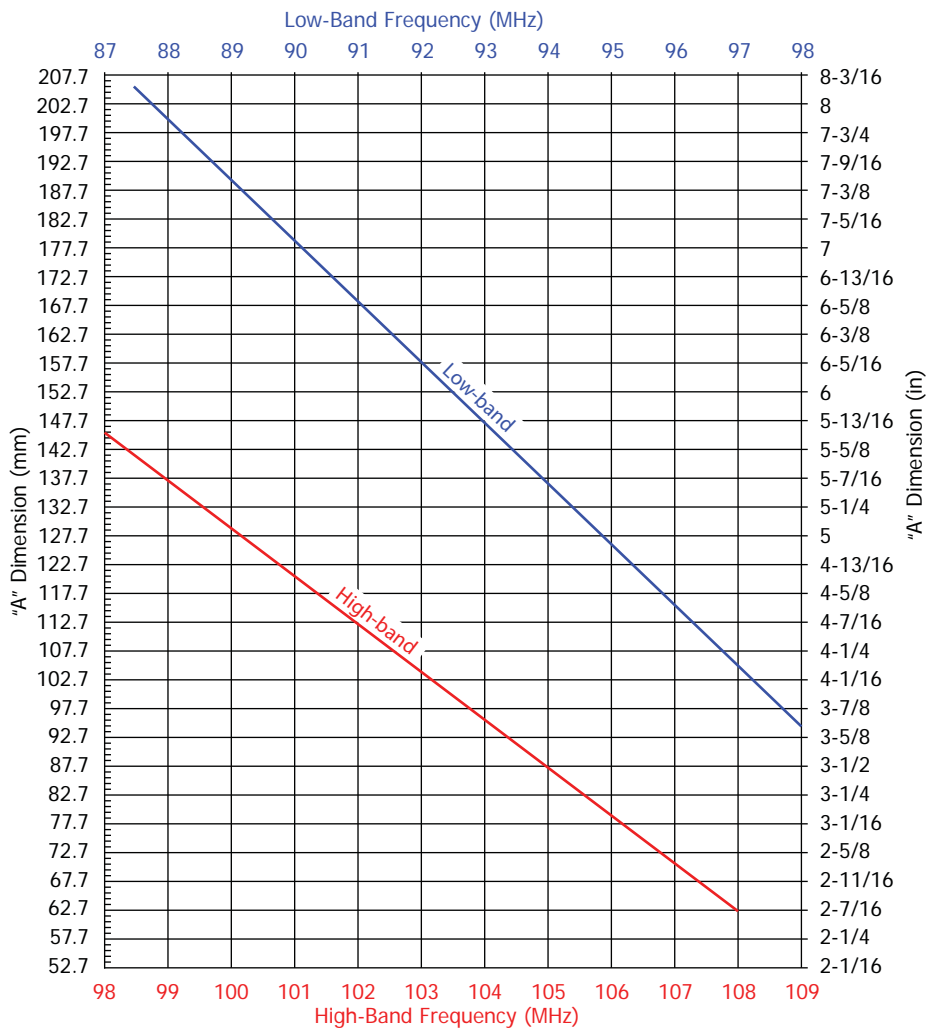
[www.shively.com](http://www.shively.com)

[sales@shively.com](mailto:sales@shively.com)

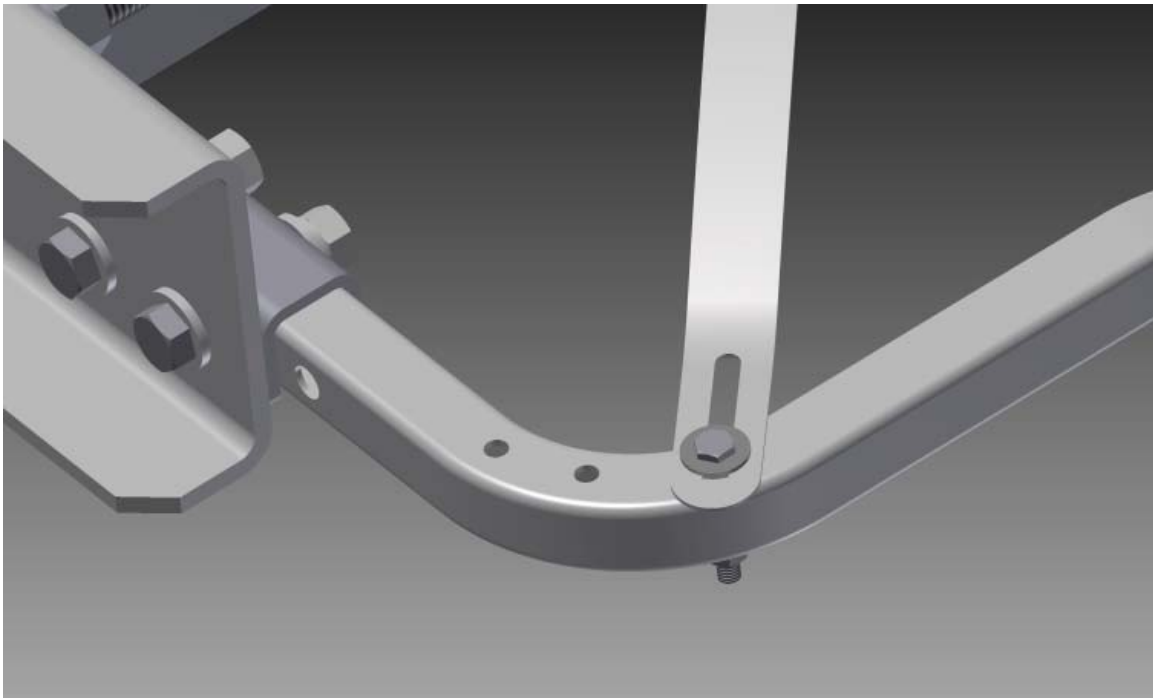
An Employee-Owned Company

Certified to ISO-9001

2. Set the arm lengths in accordance with the following table **INSTEAD OF** Figure 4 of the manual.



3. Attach the feedstrap in the special third outermost hole **INSTEAD OF** the second hole, as shown in Figure 18 of the manual.



4. Mount the power divider on the back side of the outriggered mounting pole, as shown below, or to another tower leg behind the antenna. Coil the cables in the vicinity of the power divider **INSTEAD OF** looping them up and down the pole. This will minimize the interference of the power divider and cables on the performance of the antenna.

